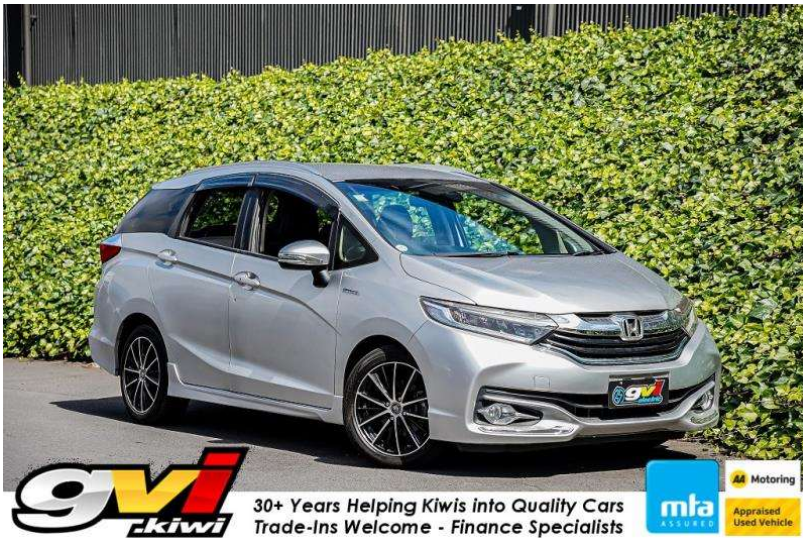


# 2016 Honda Shuttle Hybrid Z Leather / Cruise /



## VEHICLE INFORMATION

### Cash Price

Includes GST

**\$14,780**

+ on-road-costs

### Body

5 door, Station Wagon

### Reg No.

-

### Odometer

90,588 km

### Ext Colour

Silver

### Engine

1500 cc

### History

-

### Fuel Type

Hybrid

### Seats

5 seats

### Transmission

Auto

### Interior

-

### Fuel Saver Rating

4 out of 6 stars

### Audio

-

### VIN

-

### Stock ID

56219

Finance this vehicle  
from only

**\$95.96**

per week\*



Gain peace of mind  
with Mechanical  
Breakdown  
Insurance. Ask us  
how.

## Features / Comments

Honda Fit Shuttle Z Hybrid Station wagon Loaded with Premium Black Seats, Side Airbags, Alloys and Stability Control -

2016 Honda Fit Hybrid Shuttle Wagon  
1500cc Dual Petrol / Electric Hybrid Station Wagon  
New Generation Earth Dreams Hybrid Engine

Very High Spec New Shape Hybrid Fit Shuttle Z Stationwagon

- Front and Side Airbag Protection
- ESC Electronic Stability Control
- Z Aero Bodykit and Alloys
- Push Start Ignition
- ECO Mode



Auckland, Phone 09 525 5885, Email [hayden@gvi.kiwi](mailto:hayden@gvi.kiwi)  
575 Great South Road, Penrose, Auckland

\*Finance calculation based on a 36 month term, 20.0% deposit and a and with an example annual fixed interest rate of 12.25%. Actual interest rate may be higher or lower. Includes an establishment fee of \$395 and a monthly maintenance fee of \$8.50. Full term amount payable of \$17,925 (\$14,969 finance + \$2,956 deposit). Estimate only, not an offer of finance. Terms, conditions and lending criteria apply.