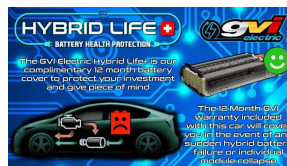
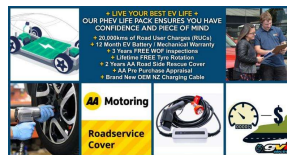


# 2016 Volkswagen Golf GTE PHEV Plug in



## VEHICLE INFORMATION

### Cash Price

Includes GST

**\$26,380**

+ on-road-costs

Finance this vehicle  
from only

**\$167.34**

per week\*



Gain peace of mind  
with Mechanical  
Breakdown  
Insurance. Ask us  
how.

### Body

5 door, Hatchback

### Odometer

53,798 km

### Engine

1400 cc

### Fuel Type

Phev

### Transmission

Auto

### Fuel Saver Rating

-

### VIN

-

### Reg No.

-

### Ext Colour

Black

### History

-

### Seats

5 seats

### Interior

-

### Audio

-

### Stock ID

57380

## Features / Comments

- Includes 20,000kms of Road User Charges -

- The Golf GTE combines the performance of the Golf GTI with the pure EV bliss of the VW e-Golf Zero-emission driving and long distance cruising in one car -

2016 VW Golf GTE PHV Plug in Hybrid  
1400cc TSI Turbo Petrol Engine  
75kW Electric Motor with 8.7kWh Battery

With Sporty Looks and drive of the Golf GTI the GTE is exhilarating as well as considerate

Includes our EV Life Package



Auckland, Phone 09 525 5885, Email [hayden@gvi.kiwi](mailto:hayden@gvi.kiwi)  
575 Great South Road, Penrose, Auckland

\*Finance calculation based on a 36 month term, 20.0% deposit and a and with an example annual fixed interest rate of 12.25%. Actual interest rate may be higher or lower. Includes an establishment fee of \$395 and a monthly maintenance fee of \$8.50. Full term amount payable of \$31,381 (\$26,105 finance + \$5,276 deposit). Estimate only, not an offer of finance. Terms, conditions and lending criteria apply.