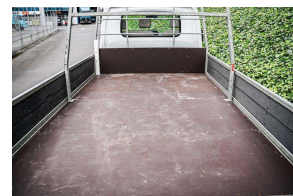


2015 LDV V80 Flat Deck Drop Side Deck / Tow



VEHICLE INFORMATION

Cash Price

Includes GST

\$17,880

+ on-road-costs

Finance this vehicle
from only

\$115.03

per week*



Gain peace of mind
with Mechanical
Breakdown
Insurance. Ask us
how.

Body

2 door, Ute

Odometer

105,478 km

Engine

2500 cc

Fuel Type

Diesel

Transmission

Manual

Fuel Saver Rating

-

VIN

-

Reg No.

JFK246

Ext Colour

White

History

-

Seats

3 seats

Interior

-

Audio

-

Stock ID

57416

Features / Comments

Ready to put to work today this ultra long wheel base Flat Deck ute is a rare find and a budget friendly option that can be driven on a normal car licence

2015 LDV V80 LWBCABCHSS 2.5D/5MT
2500cc Diesel 5 Speed Manual

NZ New V80 Cab Chassis with refurbished flat deck tray

- Dual Airbags and ABS Brakes
- Factory Alloy Wheels
- Drop Side Fate Deck
- Removable racking system
- Tow Bar



Auckland, Phone 09 525 5885, Email hayden@gvi.kiwi
575 Great South Road, Penrose, Auckland

*Finance calculation based on a 36 month term, 20.0% deposit and a and with an example annual fixed interest rate of 12.25%. Actual interest rate may be higher or lower. Includes an establishment fee of \$395 and a monthly maintenance fee of \$8.50. Full term amount payable of \$21,521 (\$17,945 finance + \$3,576 deposit). Estimate only, not an offer of finance. Terms, conditions and lending criteria apply.