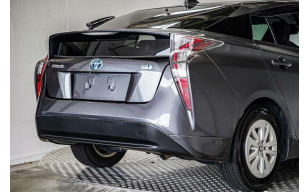


2016 Toyota Prius S Hybrid Cruise / LDW &



VEHICLE INFORMATION

Cash Price

Includes GST

\$16,380

+ on-road-costs

Body

5 door, Hatchback

Reg No.

-

Odometer

142,622 km

Ext Colour

Grey

Engine

1800 cc

History

-

Fuel Type

Hybrid

Seats

5 seats

Transmission

Auto

Interior

-

Fuel Saver Rating

-

Audio

-

VIN

-

Stock ID

57522

Finance this vehicle from only

\$105.80

per week*



Gain peace of mind with Mechanical Breakdown Insurance. Ask us how.

Features / Comments

Take your new car home from \$72 a Week* With \$0 Deposit options available T.A.P
Talk with our team of on-site finance experts for a tailor-made package that suits you

2016 Toyota Prius Hybrid S 5 Door
1800cc Hybrid Petrol Electric Dual Motor

4th Generation Toyota Hybrid prius Prime loaded with:

- Front and Side Airbag Protection
- ESP Electronic Stability Control
- TSS Safety System
- FCM Frontal Collision Mitigation
- LDW Lane Departure Warning



Auckland, Phone 09 525 5885, Email hayden@gvi.kiwi
575 Great South Road, Penrose, Auckland

*Finance calculation based on a 36 month term, 20.0% deposit and a and with an example annual fixed interest rate of 12.25%. Actual interest rate may be higher or lower. Includes an establishment fee of \$395 and a monthly maintenance fee of \$8.50. Full term amount payable of \$19,781 (\$16,505 finance + \$3,276 deposit). Estimate only, not an offer of finance. Terms, conditions and lending criteria apply.