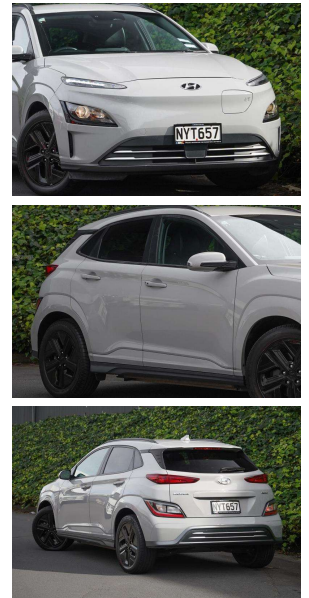
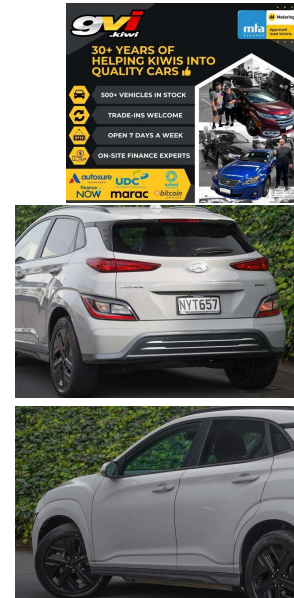


2021 Hyundai Kona EV 64kWh 96% SOH /



VEHICLE INFORMATION

Cash Price

Includes GST

\$33,880

+ on-road-costs

Body

5 door, SUV

Odometer

66,846 km

Engine

-

Fuel Type

Electric

Transmission

Automatic

Fuel Saver Rating

6 out of 6 stars

VIN

-

Reg No.

NYT657

Ext Colour

Black

History

-

Seats

5 seats

Interior

-

Audio

-

Stock ID

61968

Finance this vehicle
from only

\$213.50

per week*



Gain peace of mind
with Mechanical
Breakdown
Insurance. Ask us
how.

Features / Comments

Ready to make the move to an Electric Vehicle but wanting something different from the Nissan Leaf and Tesla Model 3? Looking for massive range without a massive price tag? Here you go

The Kona Electric with huge 64kWh Battery is a range monster delivering about 450kms per charge*

Its crossover SUV format gives increased ground clearance and an easy entry / exit without having to climb up / out of the vehicle

2021 Hyundai Kona EV 64KWH 150KW/EV/FD Gen II
150kW Electric Drive Motor Automatic

Battery and Range Expectations:
64kWh Battery delivering approx 450kms per charge*



Auckland, Phone 09 525 5885, Email hayden@gvi.kiwi
575 Great South Road, Penrose, Auckland

*Finance calculation based on a 36 month term, 20.0% deposit and a and with an example annual fixed interest rate of 12.25%. Actual interest rate may be higher or lower. Includes an establishment fee of \$395 and a monthly maintenance fee of \$8.50. Full term amount payable of \$40,081 (\$33,305 finance + \$6,776 deposit). Estimate only, not an offer of finance. Terms, conditions and lending criteria apply.