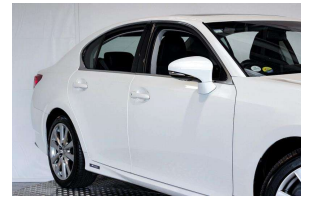


2012 Lexus GS 450h Hybrid New Shape /



VEHICLE INFORMATION

Cash Price

Includes GST

\$25,880

+ on-road-costs

Body
4 door, Sedan

Reg No.
-

Odometer
92,309 km

Ext Colour
White

Engine
3500 cc

History
-

Fuel Type
Hybrid

Seats
5 seats

Transmission
Auto

Interior
-

Fuel Saver Rating
5 out of 6 stars

Audio
-

VIN
-

Stock ID
49719

Finance this vehicle
from only

\$156.52

per week*



Gain peace of mind
with Mechanical
Breakdown
Insurance. Ask us
how.

Features / Comments

- High Spec Lexus GS450h Hybrid with Premium Black Interior and Big Factory Alloys Fully Loaded with every option under the sun this VIP Sedan with looks, economy and power -

2012 Lexus GS450H Hybrid
3500cc Automatic Hybrid Petrol Electric

+ Includes our 12 Month Hybrid Battery Warranty +

Luxury Toyota Lexus Hybrid Features Include:

- Factory Shadow Chrome Alloy Wheels
- Front & Side Airbag Protection
- Premium Black Interior



Auckland, Phone 09 525 5885, Email hayden@gvi.kiwi
575 Great South Road, Penrose, Auckland

*Finance calculation based on a 36 month term, 20.0% deposit and a and with an example annual fixed interest rate of 8.88%. Actual interest rate may be higher or lower. Includes an establishment fee of \$395 and a monthly maintenance fee of \$8.50. Full term amount payable of \$29,594 (\$24,418 finance + \$5,176 deposit). Estimate only, not an offer of finance. Terms, conditions and lending criteria apply.