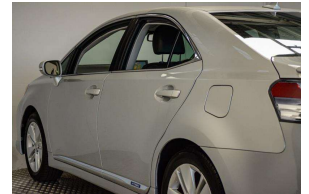


2011 Lexus HS250h Hybrid Leather / Cruise /



30+ Years Helping Kiwis into Quality Cars
Trade-Ins Welcome - Finance Specialists



VEHICLE INFORMATION

Cash Price

Includes GST

\$14,880

+ on-road-costs

Finance this vehicle
from only

\$94.72

per week*



Gain peace of mind
with Mechanical
Breakdown
Insurance. Ask us
how.

Body
4 door, Sedan

Odometer
94,975 km

Engine
2400 cc

Fuel Type
Hybrid

Transmission
Auto

Fuel Saver Rating
-

VIN
-

Reg No.

-

Ext Colour
Silver

History

-

Seats
5 seats

Interior

-

Audio

-

Stock ID
51052

Features / Comments

- High Grade Lexus Hybrid Sedan with super economical dual Hybrid Petrol / Electric motors, Black Interior, Cruise Control, Front and Side Airbags and much much more -

2011 Lexus HS 250h Hybrid Sedan
2400cc Petrol / Electric Automatic

Very good looking late model Hybrid sedan loaded with luxury:

- Front and Side Airbag Protection
- ESC Electronic Stability Control
- Steering Wheel Multifunctional Controls
- ECO / EV / PWR Modes
- Premium Black Leather Interior



Auckland, Phone 09 525 5885, Email hayden@gvi.kiwi
575 Great South Road, Penrose, Auckland

*Finance calculation based on a 36 month term, 20.0% deposit and a and with an example annual fixed interest rate of 10.88%. Actual interest rate may be higher or lower. Includes an establishment fee of \$395 and a monthly maintenance fee of \$8.50. Full term amount payable of \$17,752 (\$14,776 finance + \$2,976 deposit). Estimate only, not an offer of finance. Terms, conditions and lending criteria apply.