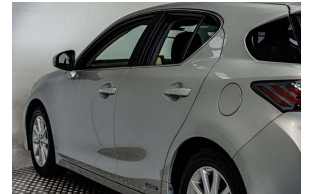


# 2011 Lexus CT 200h Hybrid / EV Mode /



## VEHICLE INFORMATION

### Cash Price

Includes GST

# \$18,480

+ on-road-costs

### Body

5 door, Hatchback

### Reg No.

-

### Odometer

106,700 km

### Ext Colour

Silver

### Engine

1800 cc

### History

-

### Fuel Type

Hybrid

### Seats

5 seats

### Transmission

Auto

### Interior

-

### Fuel Saver Rating

-

### Audio

-

### VIN

-

### Stock ID

52051

Finance this vehicle from only

# \$116.44

per week\*



Gain peace of mind with Mechanical Breakdown Insurance. Ask us how.

## Features / Comments

Take advantage of the Clean Car Discount and get a cash rebate of \$1,202 after purchase

- CT200H in Grey Luxury Hybrid Hatchback with Premium Black Cloth Interior Economy and Performance with Dual Petrol / Electric Motors -

Sports Plus Luxury Check out the options

- Front and Side Airbag Protection
- Steering Wheel Audio Controls
- Push Start Ignition
- ION Air Purifier
- Cruise Control
- Auto Headlight and Wipers



Auckland, Phone 09 525 5885, Email [hayden@gvi.kiwi](mailto:hayden@gvi.kiwi)  
575 Great South Road, Penrose, Auckland

\*Finance calculation based on a 36 month term, 20.0% deposit and a and with an example annual fixed interest rate of 10.88%. Actual interest rate may be higher or lower. Includes an establishment fee of \$395 and a monthly maintenance fee of \$8.50. Full term amount payable of \$21,861 <span style="">(\$18,165 finance + \$3,696 deposit) </span>. Estimate only, not an offer of finance. Terms, conditions and lending criteria apply.