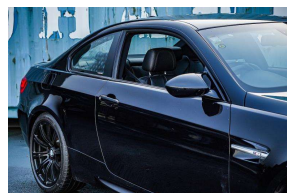


2011 BMW M3 Coupe NZ New 59kms / 4000cc



30+ Years Helping Kiwis into Quality Cars
Trade-Ins Welcome - Finance Specialists



VEHICLE INFORMATION

Cash Price

Includes GST

\$59,880

+ on-road-costs

Finance this vehicle
from only

\$373.50

per week*



Gain peace of mind
with Mechanical
Breakdown
Insurance. Ask us
how.

Body
2 door, Coupe

Odometer
58,982 km

Engine
4000 cc

Fuel Type
Petrol

Transmission
Auto

Fuel Saver Rating
-

VIN
-

Reg No.
HYY683

Ext Colour
Black

History
-

Seats
4 seats

Interior
-

Audio
-

Stock ID
55579

Features / Comments

2011 E92 BMW M3 COUPE 7A 2DR 4.0L Black Saloon
4000cc V8 with DCT Paddle Shift Manual Shift Transmission

Unleash the raw power and stunning elegance of the 2010 BMW M3 Coupe E92, the epitome of style and performance. This all-black beauty comes equipped with a Getrab Dual Clutch Transmission (DCT) gearbox, providing rapid shifts and exhilarating acceleration.

Adorned with a carbon fiber roof, this M3 not only looks sharp, but it also shaves off weight, boosting speed and handling. Inside, the black leather interior screams luxury, with every detail thoughtfully designed for ultimate driver comfort and convenience.

But it's not just about good looks - this M3 Coupe is a performance beast. The rev-happy V8 engine delivers a thrilling roar, while the responsive steering and firm grip keep you connected to the road, a true BMW M Car.



Auckland, Phone 09 525 5885, Email hayden@gvi.kiwi
575 Great South Road, Penrose, Auckland

*Finance calculation based on a 36 month term, 20.0% deposit and a and with an example annual fixed interest rate of 12.25%. Actual interest rate may be higher or lower. Includes an establishment fee of \$395 and a monthly maintenance fee of \$8.50. Full term amount payable of \$70,242 (\$58,266 finance + \$11,976 deposit). Estimate only, not an offer of finance. Terms, conditions and lending criteria apply.