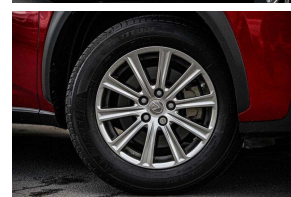
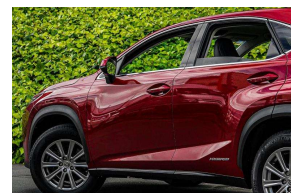


2015 Lexus NX 300h Hybrid / Leather / Cruise



30+ Years Helping Kiwis into Quality Cars
Trade-Ins Welcome - Finance Specialists



VEHICLE INFORMATION

Cash Price

Includes GST

\$32,780

+ on-road-costs

Finance this vehicle
from only

\$206.73

per week*



Gain peace of mind
with Mechanical
Breakdown
Insurance. Ask us
how.

Body
5 door, SUV

Odometer
85,512 km

Engine
2500 cc

Fuel Type
Hybrid

Transmission
Automatic

Fuel Saver Rating
3.5 out of 6 stars

VIN
-

Reg No.
-

Ext Colour
Red

History
-

Seats
5 seats

Interior
-

Audio
-

Stock ID
58698

Features / Comments

- Lexus NX Hybrid Fully Optioned with Everything This is the one you want with Full Black Leather, Cruise Control and Alloys -

2015 Lexus NX 300h Hybrid I Package
2500cc Petrol Electric Hybrid Automatic

Top of the range luxury Lexus sports SUV with everything

- Front and Side Airbag Protection
- ESC Electronic Stability Control
- FCM Frontal Collision Mitigation
- LDW Lane Departure Warning
- Full Black Leather Seats
- F Sport Style White Accent Stitching



Auckland, Phone 09 525 5885, Email hayden@gvi.kiwi
575 Great South Road, Penrose, Auckland

*Finance calculation based on a 36 month term, 20.0% deposit and a and with an example annual fixed interest rate of 12.25%. Actual interest rate may be higher or lower. Includes an establishment fee of \$395 and a monthly maintenance fee of \$8.50. Full term amount payable of \$38,805 (\$32,249 finance + \$6,556 deposit). Estimate only, not an offer of finance. Terms, conditions and lending criteria apply.